



R.I.W.C.

ROSWELL INVASION WRESTLING CLUB

- CRASH AND CLASH -



NM STATE TOURNAMENT QUALIFIER

SUNDAY - DECEMBER 22ND, 2024

ROSWELL HIGH SCHOOL - 500 W. HOBBS ST, ROSWELL NM, 88201

SESSION ONE - 6U, 10U, 14U BOYS / 8U, 12U GIRLS, HS GIRLS (8:30am–12:30pm)

SESSION TWO - 8U & 12U BOYS, HS BOYS / 6U, 10U, 14U GIRLS (1pm–Completion)

WEIGH INS - Saturday, December 21st, 2024 from 10:00am to completion of Novice Tournament at Roswell High School wrestling room. Look for the big gym and there will be signs in the building to direct you. Sunday Weigh-Ins from 6:00-7:00am. All weights will be scratch weight. Wrestlers will be required to weigh in with their uniform. (Singlet or 2 piece). If a wrestler does not make the registered weight, wrestler can pay an \$10.00 rebracketing fee

Age as of September 1, 2024

6U BOYS	6U GIRLS	8U BOYS	8U GIRLS	10U BOYS	10U GIRLS	12U BOYS	12U GIRLS	14U BOYS	14U GIRLS	HS BOYS	HS GIRLS
32	40	42	45	55	55	60	65	80	90	98	90
35	45	46	50	60	60	65	70	88	100	103	95
39	50	49	55	65	65	70	75	98	107	107	100
43	55	53	60	70	70	75	80	107	114	114	107
47	60	57	65	75	75	80	85	114	120	121	114
51	65	61	70	80	80	85	90	121	126	127	120
55	70	65	75	85	90	90	95	127	132	133	126
59	75	69	80	90	100	95	100	133	138	139	132
63	HWT	73	85	95	110	100	110	139	145	145	138
67	85 MAX	77	HWT	100	120	105	120	145	152	152	145
71		81	100 MAX	110	HWT	110	130	152	165	160	152
75		87		120	145 MAX	115	145	160	185	172	165
80		93		130		120	HWT	172	235	189	185
HWT		HWT		HWT		130	165 MAX	189	235 MAX	215	235
95 MAX		120 MAX		155 MAX		140		215		285	235 MAX
						150		HWT		285 MAX	
						165		285 MAX			
						175					
						HWT					
						205 MAX					
Must be Four (4) years old on or before September 1. No 3 year olds are allowed to wrestle in any NMJW sanctioned events.											
All athletes are required to make scratch weight at all NMJW Sanction events											
A singlet or approved uniform with NFHS is required by all athletes at all weigh-ins											

ENTRY FEE

\$22.70 entry fee per wrestler. Entries and payments made ONLINE.

Double bracketing is allowed but must be in 2 divisions. Wrestlers cannot double bracket in the same division in 2 different weight classes.

DOORS OPEN AT 7:30am

COACHES MEETING AT 8:15am

RULES

6U & 8U / 1-1-1

10U, 12U, & 14U / 1:30-1:30-1:30

HS / 2-2-2

All Consolation Rounds are 1-1-1

This tournament will follow the NFHS wrestling rules

REGISTRATION - All entries & payment must be registered through trackwrestling.com.

Entry deadline is: Thursday, December 19th at 11:59pm

AWARDS - Individual Medals for 1st thru 4th. Team Awards for 1st thru 3rd

ADMISSION - There is a \$2.00 entry fee for all spectators. Presale admission at weigh-ins

CONTACT INFO - Chris Spear 575.635.6338

Johnathan Buckmister 505.850.5565





R.I.W.C.

ROSWELL INVASION WRESTLING CLUB

- CRASH AND CLASH - TOURNAMENT INFORMATION



SATURDAY ONLY
WEIGH-INS
DIRECTIONS

PARKING

WEIGH-INS
&
TOURNAMENT

WALKING
PATH

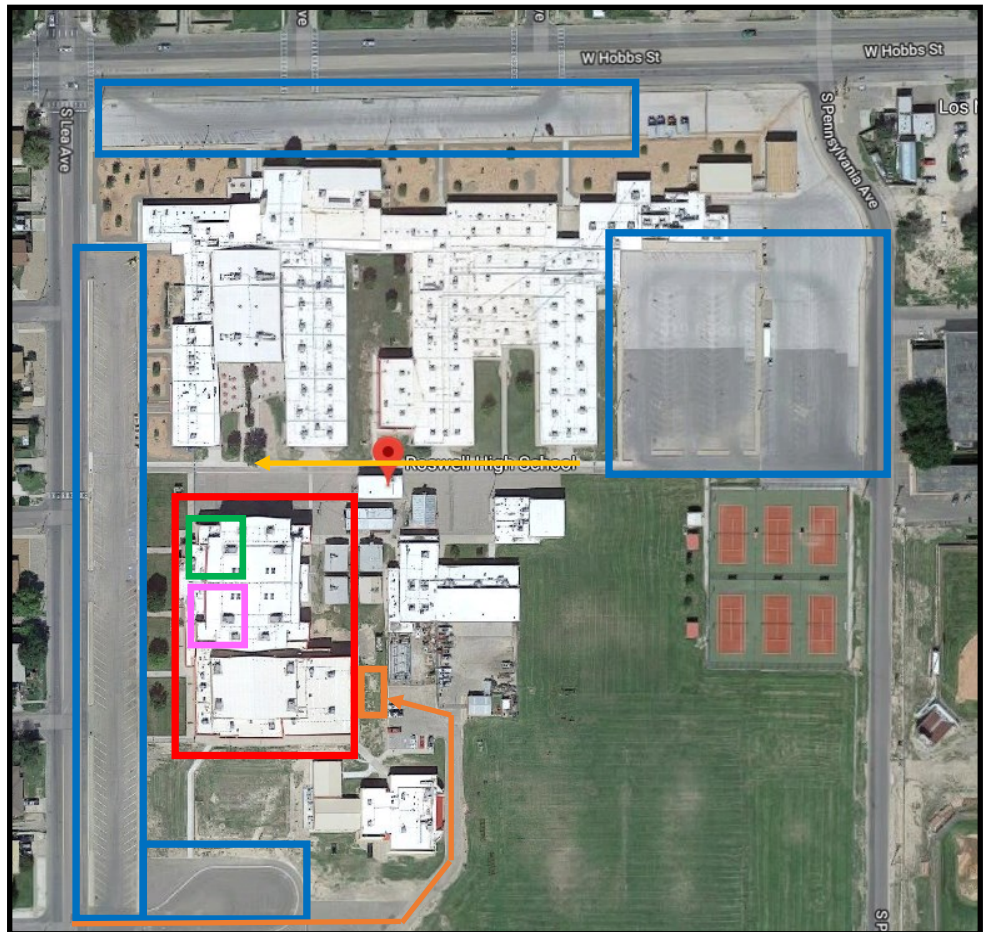
Presale for spectator admission will be sold at weigh-ins.

Hospitality Room available for Coaches, Referees & VIPs.

*****ONLY*****

Concession will contain hot foods as well as snacks.

Tournament Shirts & Merch Will Be Available for Purchase



SPECTATOR
ENTRANCE

WRESTLER ENTRANCE
(TOURNAMENT DAY)

